

# New York State Fact Sheet on Alcohol-Related Crashes

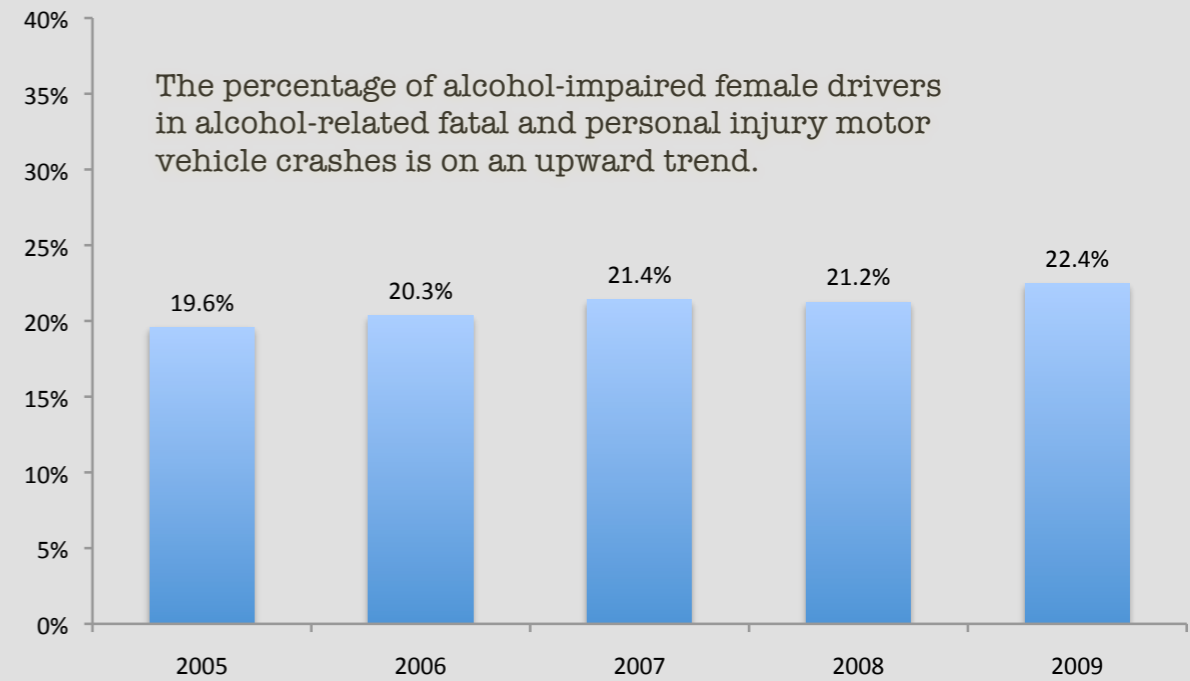
## Total and Alcohol-Related Fatalities

	2005	2006	2007	2008	2009*
Total Fatalities	1,410	1,433	1,317	1,224	1,146
Number of Alcohol-Related Fatalities	382	397	373	381	342
Percent of Total Fatalities	27%	28%	28%	31%	30%

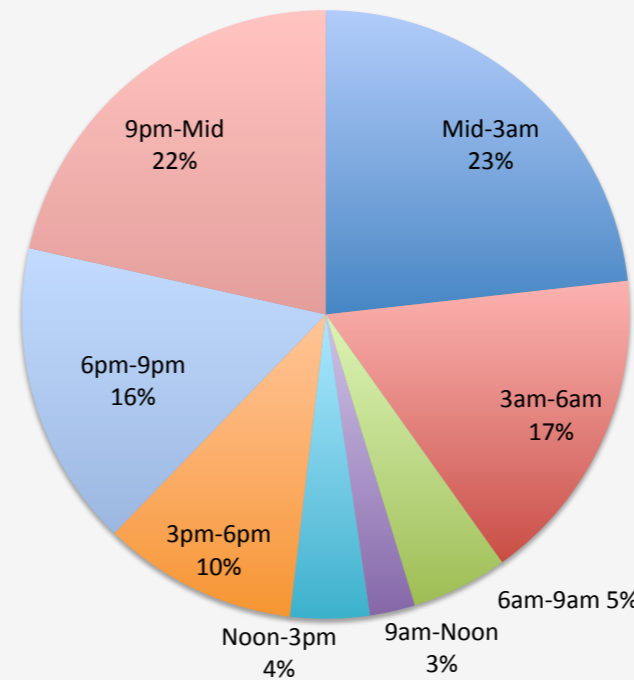
The percentage of fatalities that are alcohol-related increased between 2005 and 2008, then fell slightly in 2009.

\* All 2009 data on this sheet are preliminary.

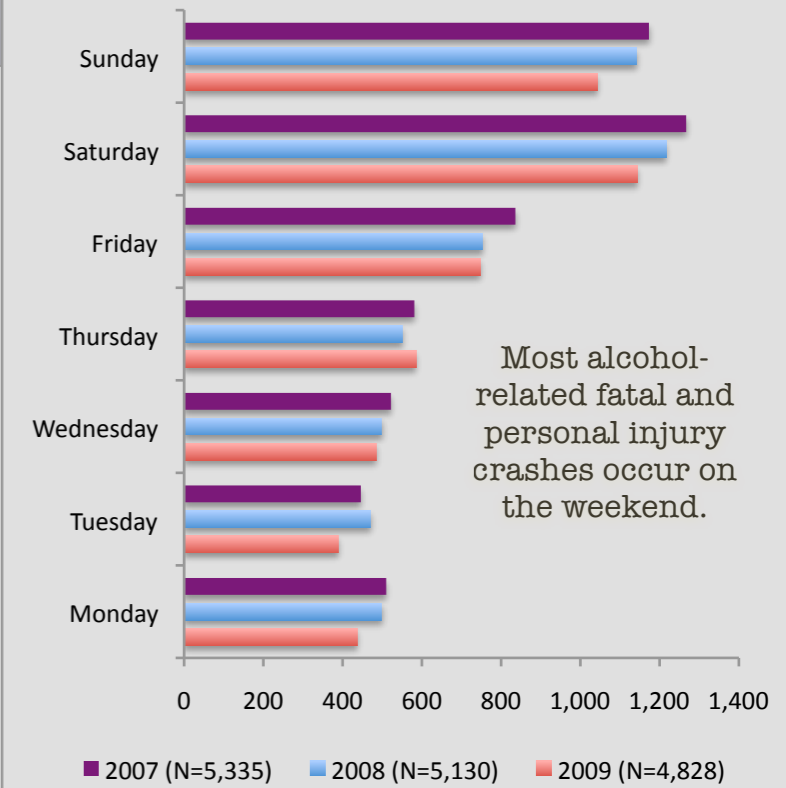
## Alcohol-Related Fatal and Personal Injury Crashes Percentage of Alcohol-Impaired Drivers Who Are Female



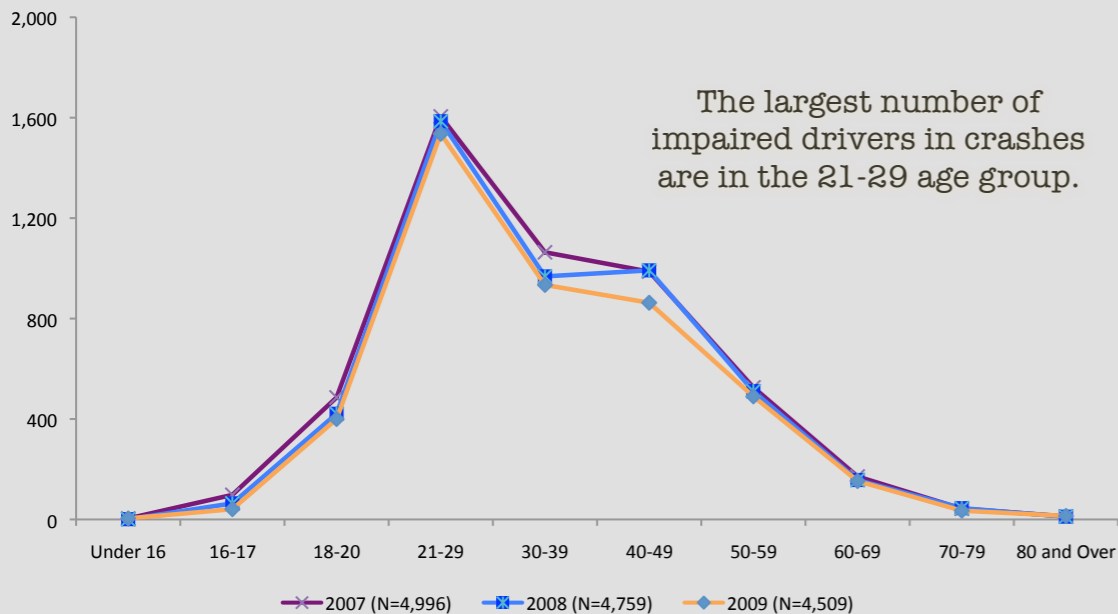
## Alcohol-Related Fatal and Personal Injury Crashes Time of Day 2009 (N=4,828)



## Alcohol-Related Fatal and Personal Injury Crashes Day of Week



## Alcohol-Related Fatal and Personal Injury Crashes Alcohol-Impaired Drivers by Age Group



**Note:** Fatalities refer to people, while crashes refer to the crash event. One fatal crash (the event) may involve more than one vehicle and more than one fatality. All data were obtained from the NYS Department of Motor Vehicles.

**Prepared by the Institute for Traffic Safety Management and Research, June 2010.**