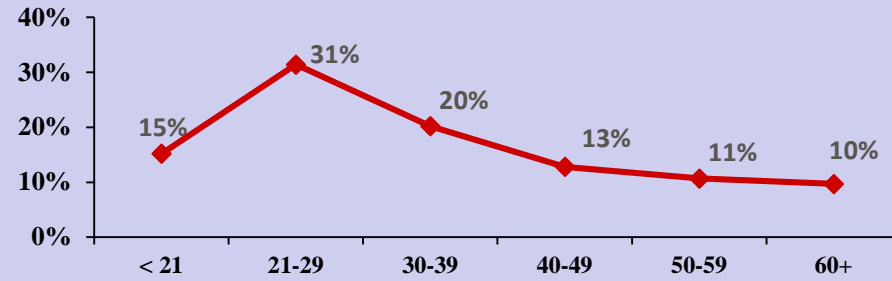


# New York State Fact Sheet on Speed-Related Motor Vehicle Crashes\* and Tickets Issued for Speeding

	2014	2015	2016	2017	2018
<b>Total Fatal Crashes</b>	966	1,045	969	933	882
Speed-Related Fatal Crashes	280	292	274	271	225
% of All Fatal Crashes	29.0%	27.9%	28.3%	29.1%	25.5%
<b>Total Tickets Issued</b>	<b>3,584,382</b>	<b>3,505,545</b>	<b>3,576,620</b>	<b>3,724,952</b>	<b>3,724,952</b>
# of Speeding Tickets	661,962	694,180	712,370	693,051	693,051
% of All Tickets	18.5%	19.8%	19.9%	18.6%	18.6%

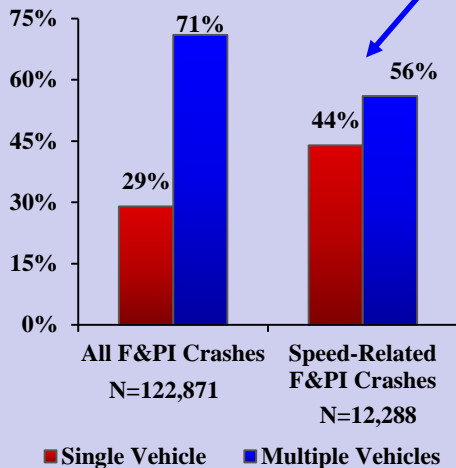
### Speeding Drivers in F&PI Crashes by Age: 2018



### Other Top Contributing Factors Associated with Speeding Drivers in F&PI Crashes: 2018

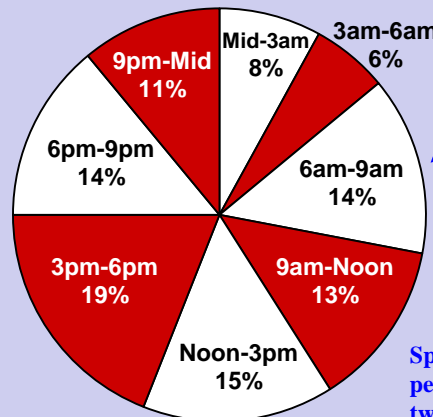
	Speeding Drivers in Fatal Crashes (N=226)	Speeding Drivers in PI Crashes (N=11,874)
Alcohol Involvement	9%	7%
Passing/Lane Use/Lane Changing	17%	9%
Slippery Pavement	8%	20%
Driver Inattention/Distraction	5%	9%
Failure To Keep Right	6%	3%
Following Too Closely	2%	14%

### Speed-Related F&PI Crashes by Manner of Collision: 2018



Speed-related F&PI crashes are much more likely to involve a single vehicle than all F&PI crashes (44% vs. 29%).

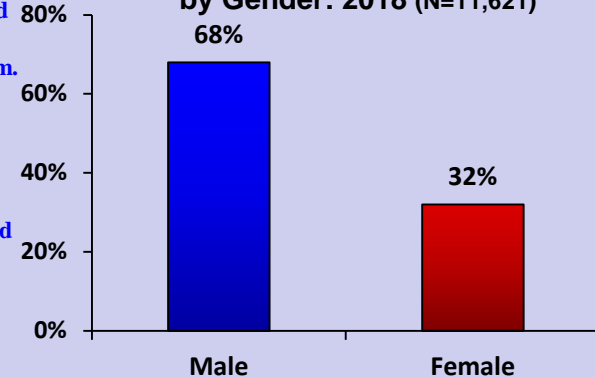
### Speed-Related F&PI Crashes by Time of Day: 2018 (N=12,245)



Just over one-third (36%) of speed-related F&PI crashes occur between noon and 6pm.

Speeding drivers in fatal and personal injury crashes are twice as likely to be male.

### Speeding Drivers in F&PI Crashes by Gender: 2018 (N=11,621)



\*Speed-Related Motor Vehicle Crashes are identified based on the presence of a contributing factor for unsafe speed or a citation for speeding. Includes police-reported crashes only.

Source: All data were obtained from the NYS Department of Motor Vehicles.

Institute for Traffic Safety Management and Research, October 2019