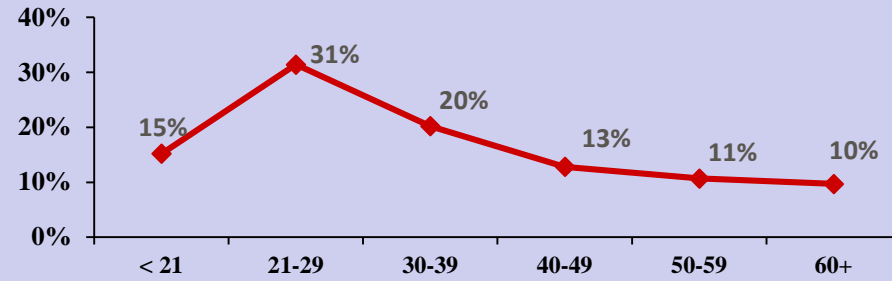


New York State Fact Sheet on Speed-Related Motor Vehicle Crashes* and Tickets Issued for Speeding

	2014	2015	2016	2017	2018
Total Fatal Crashes	966	1,045	969	933	882
Speed-Related Fatal Crashes	280	292	274	271	225
% of All Fatal Crashes	29.0%	27.9%	28.3%	29.1%	25.5%
Total Tickets Issued	3,584,382	3,505,545	3,576,620	3,724,952	3,639,413
# of Speeding Tickets	661,962	694,180	712,370	693,051	676,252
% of All Tickets	18.5%	19.8%	19.9%	18.6%	18.6%

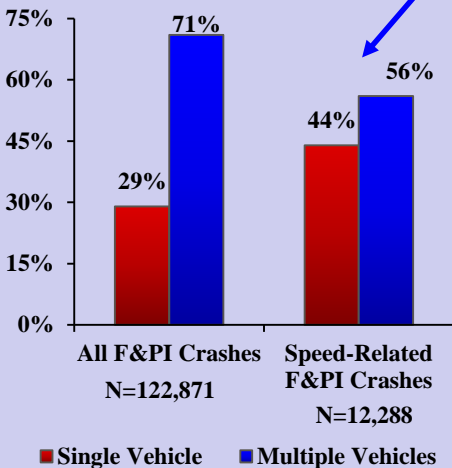
Speeding Drivers in F&PI Crashes by Age: 2018



Other Top Contributing Factors Associated with Speeding Drivers in F&PI Crashes: 2018

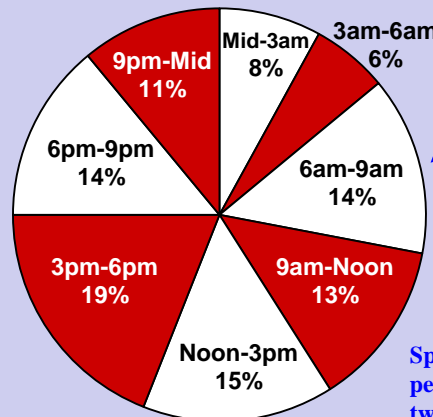
	Speeding Drivers in Fatal Crashes (N=226)	Speeding Drivers in PI Crashes (N=11,874)
Alcohol Involvement	9%	7%
Passing/Lane Use/Lane Changing	17%	9%
Slippery Pavement	8%	20%
Driver Inattention/Distraction	5%	9%
Failure To Keep Right	6%	3%
Following Too Closely	2%	14%

Speed-Related F&PI Crashes by Manner of Collision: 2018



Speed-related F&PI crashes are much more likely to involve a single vehicle than all F&PI crashes (44% vs. 29%).

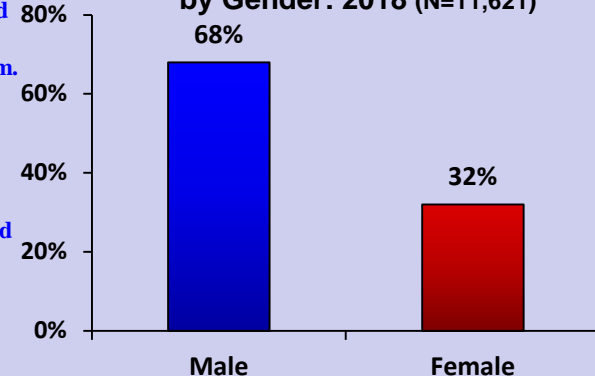
Speed-Related F&PI Crashes by Time of Day: 2018 (N=12,245)



Just over one-third (36%) of speed-related F&PI crashes occur between noon and 6pm.

Speeding drivers in fatal and personal injury crashes are twice as likely to be male.

Speeding Drivers in F&PI Crashes by Gender: 2018 (N=11,621)



*Speed-Related Motor Vehicle Crashes are identified based on the presence of a contributing factor for unsafe speed or a citation for speeding. Includes police-reported crashes only.

Source: All data were obtained from the NYS Department of Motor Vehicles.

Institute for Traffic Safety Management and Research, October 2019