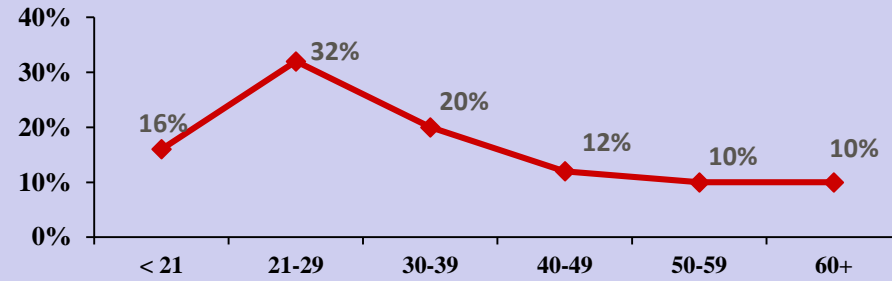


New York State Fact Sheet on Speed-Related Motor Vehicle Crashes* and Tickets Issued for Speeding

	2015	2016	2017	2018	2019
Total Fatal Crashes	1,045	969	933	882	881
Speed-Related Fatal Crashes	292	274	271	225	235
% of All Fatal Crashes	27.9%	28.3%	29.1%	25.5%	26.7%
Total Tickets Issued	3,505,545	3,576,620	3,724,952	3,639,413	3,502,973
# of Speeding Tickets	694,180	712,370	693,051	676,252	672,925
% of All Tickets	19.8%	19.9%	18.6%	18.6%	19.2%

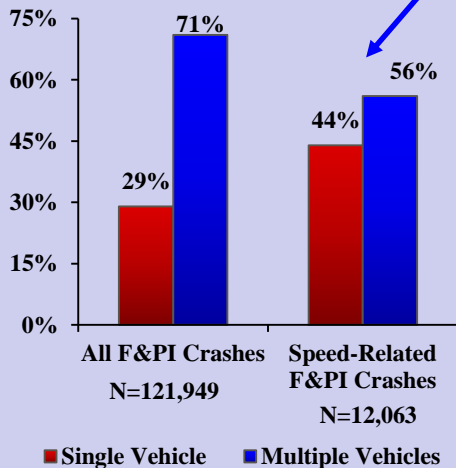
Speeding Drivers in F&PI Crashes by Age: 2019



Other Top Contributing Factors Associated with Speeding Drivers in F&PI Crashes: 2019

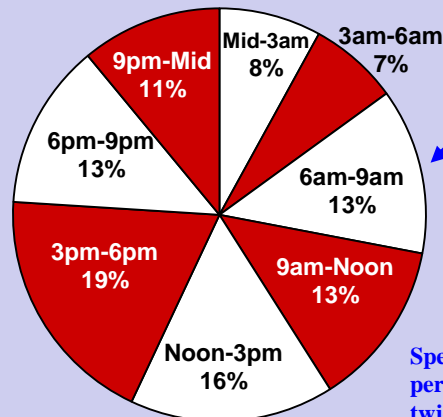
	Speeding Drivers in Fatal Crashes (N=236)	Speeding Drivers in PI Crashes (N=11,552)
Alcohol Involvement	16%	7%
Passing/Lane Use/Lane Changing	14%	10%
Slippery Pavement	7%	19%
Driver Inattention/Distraction	5%	9%
Failure To Keep Right	6%	3%
Following Too Closely	<1%	13%

Speed-Related F&PI Crashes by Manner of Collision: 2019



Speed-related F&PI crashes are much more likely to involve a single vehicle than all F&PI crashes (44% vs. 29%).

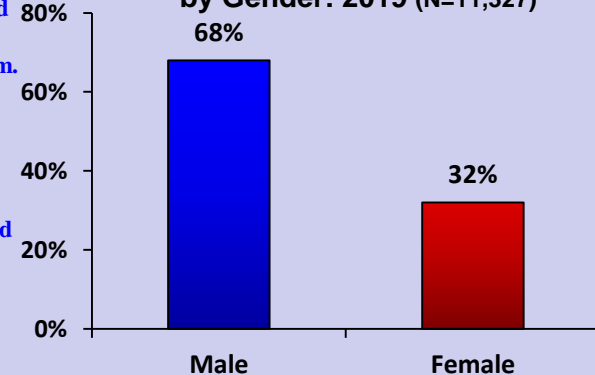
Speed-Related F&PI Crashes by Time of Day: 2019 (N=12,015)



Just over one-third (35%) of speed-related F&PI crashes occur between noon and 6pm.

Speeding drivers in fatal and personal injury crashes are twice as likely to be male.

Speeding Drivers in F&PI Crashes by Gender: 2019 (N=11,327)



*Speed-Related Motor Vehicle Crashes are identified based on the presence of a contributing factor for unsafe speed or a citation for speeding. Includes police-reported crashes only.

Source: All data were obtained from the NYS Department of Motor Vehicles.