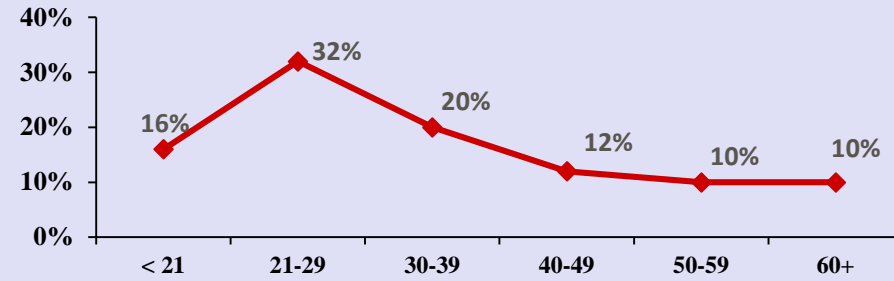


New York State Fact Sheet on Speed-Related Motor Vehicle Crashes* and Tickets Issued for Speeding

| | 2015 | 2016 | 2017 | 2018 | 2019 |
|-----------------------------|-----------|-----------|-----------|-----------|-----------|
| Total Fatal Crashes | 1,045 | 969 | 933 | 882 | 881 |
| Speed-Related Fatal Crashes | 292 | 274 | 271 | 225 | 235 |
| % of All Fatal Crashes | 27.9% | 28.3% | 29.1% | 25.5% | 26.7% |
| Total Tickets Issued | 3,505,545 | 3,576,620 | 3,724,952 | 3,639,413 | 3,502,973 |
| # of Speeding Tickets | 694,180 | 712,370 | 693,051 | 676,252 | 672,925 |
| % of All Tickets | 19.8% | 19.9% | 18.6% | 18.6% | 19.2% |

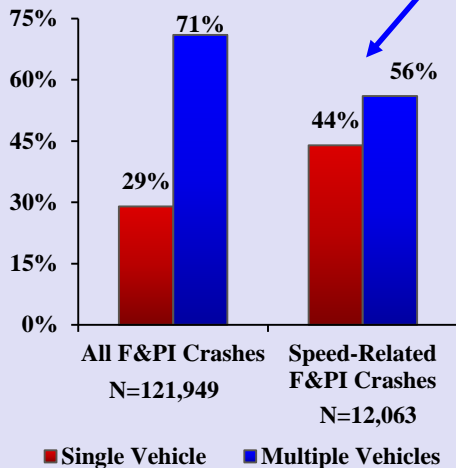
Speeding Drivers in F&PI Crashes by Age: 2019



Other Top Contributing Factors Associated with Speeding Drivers in F&PI Crashes: 2019

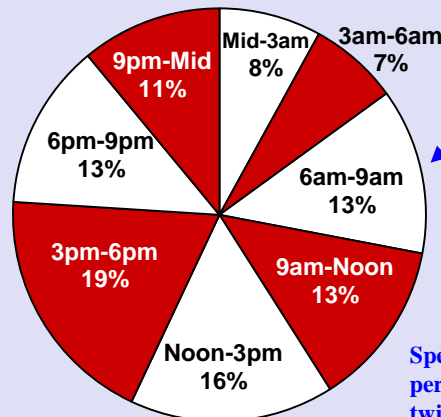
| | Speeding Drivers in Fatal Crashes (N=236) | Speeding Drivers in PI Crashes (N=11,552) |
|--------------------------------|---|---|
| Alcohol Involvement | 16% | 7% |
| Passing/Lane Use/Lane Changing | 14% | 10% |
| Slippery Pavement | 7% | 19% |
| Driver Inattention/Distraction | 5% | 9% |
| Failure To Keep Right | 6% | 3% |
| Following Too Closely | <1% | 13% |

Speed-Related F&PI Crashes by Manner of Collision: 2019



Speed-related F&PI crashes are much more likely to involve a single vehicle than all F&PI crashes (44% vs. 29%).

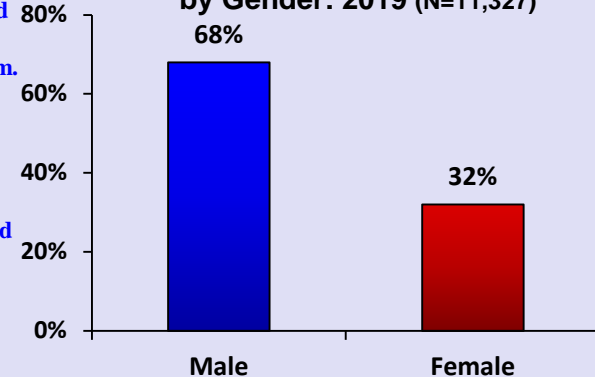
Speed-Related F&PI Crashes by Time of Day: 2019 (N=12,015)



Just over one-third (35%) of speed-related F&PI crashes occur between noon and 6pm.

Speeding drivers in fatal and personal injury crashes are twice as likely to be male.

Speeding Drivers in F&PI Crashes by Gender: 2019 (N=11,327)



*Speed-Related Motor Vehicle Crashes are identified based on the presence of a contributing factor for unsafe speed or a citation for speeding. Includes police-reported crashes only.

Source: All data were obtained from the NYS Department of Motor Vehicles.