

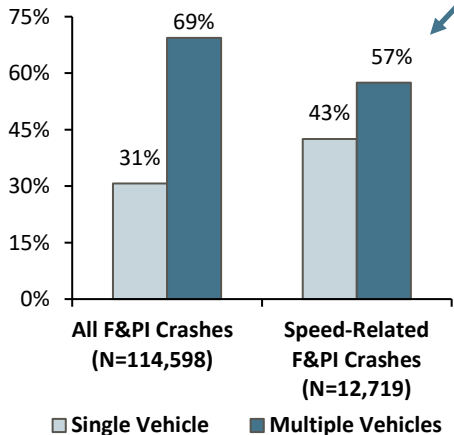
# New York State Fact Sheet - Speed-Related Motor Vehicle Crashes\* and Tickets Issued for Speeding

	2019	2020	2021	2022	2023
<b>Total Fatal Crashes</b>	881	945	1,068	1,092	1,022
Speed-Related Fatal Crashes	235	323	364	345	307
% of All Fatal Crashes	26.7%	34.2%	34.1%	31.6%	30.0%
<b>Total Tickets Issued</b>	3,502,973	2,274,612	2,447,148	2,566,092	2,834,035
# of Speeding Tickets	672,925	565,548	561,422	525,573	535,081
% of All Tickets	19.2%	24.9%	22.9%	20.5%	18.9%

Other Top Contributing Factors Associated with Speeding Drivers in F&PI Crashes: 2023		
	Speeding Drivers in Fatal Crashes (N=305)	Speeding Drivers in PI Crashes (N=11,631)
Alcohol Involvement	13%	8%
Passing/Lane Use/Lane Changing	18%	14%
Slippery Pavement	4%	12%
Driver Inattention/Distraction	4%	10%
Failure To Keep Right	7%	3%
Following Too Closely	3%	13%

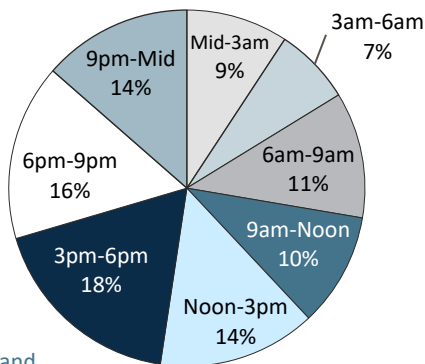
**Speed-Related F&PI Crashes by Manner of Collision: 2023**

Speed-related F&PI crashes are much more likely to involve a single vehicle than all F&PI crashes (43% vs. 31%).

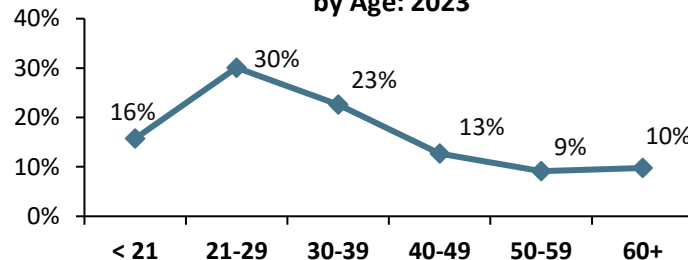


**Speed-Related F&PI Crashes by Time of Day: 2023 (N=12,652)**

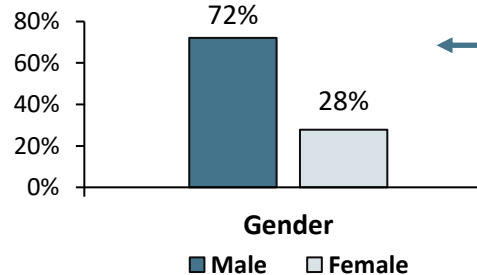
34% of speed-related F&PI crashes occur between 3pm and 9pm.



**Speeding Drivers in F&PI Crashes by Age: 2023**



**Speeding Drivers in F&PI Crashes by Gender: 2023 (N=11,023)**



Speeding drivers in fatal and personal injury crashes are more than twice as likely to be male.

\* Speed-Related Motor Vehicle Crashes are identified based on the presence of a contributing factor for unsafe speed or a citation for speeding. Includes police-reported crashes only.

Source: All data were obtained from the NYS Department of Motor Vehicles.

