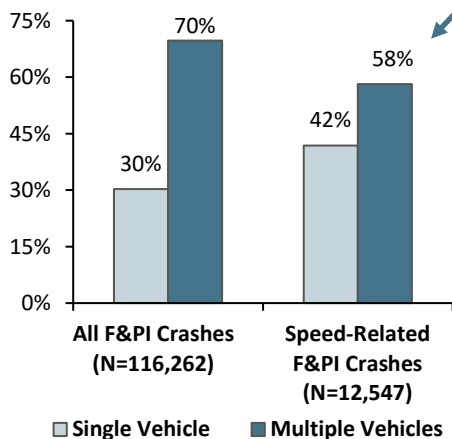


New York State Fact Sheet - Speed-Related Motor Vehicle Crashes* and Tickets Issued for Speeding

	2020	2021	2022	2023	2024
Total Fatal Crashes	945	1,068	1,092	1,022	1,026
Speed-Related Fatal Crashes	323	364	345	307	315
% of All Fatal Crashes	34.2%	34.1%	31.6%	30.0%	30.7%
Total Tickets Issued	2,274,612	2,447,148	2,566,092	2,834,035	2,893,404
# of Speeding Tickets	565,548	561,422	525,573	535,081	530,836
% of All Tickets	24.9%	22.9%	20.5%	18.9%	18.3%

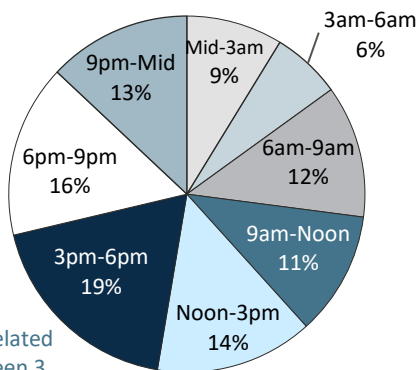
Other Top Contributing Factors Associated with Speeding Drivers in F&PI Crashes: 2024		
	Speeding Drivers in Fatal Crashes (N=313)	Speeding Drivers in PI Crashes (N=11,646)
Alcohol Involvement	12%	7%
Passing/Lane Use/Lane Changing	23%	14%
Slippery Pavement	3%	12%
Driver Inattention/Distraction	4%	9%
Failure To Keep Right	9%	3%
Following Too Closely	3%	14%

Speed-Related F&PI Crashes by Manner of Collision: 2024



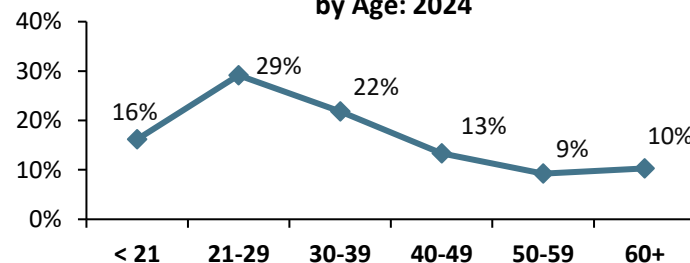
Speed-related F&PI crashes were much more likely to involve a single vehicle than all F&PI crashes (42% vs. 30%).

Speed-Related F&PI Crashes by Time of Day: 2024 (N=12,470)

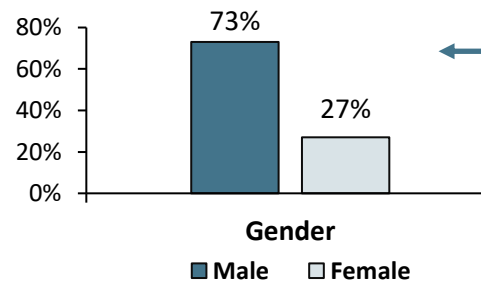


The largest share of speed-related F&PI crashes occurred between 3 p.m. and 6 p.m.

Speeding Drivers in F&PI Crashes by Age: 2024



Speeding Drivers in F&PI Crashes by Gender: 2024 (N=11,080)



Speeding drivers in fatal and personal injury crashes were more than twice as likely to be male.

* Speed-Related Motor Vehicle Crashes are identified based on the presence of a contributing factor for unsafe speed or a citation for speeding. Includes police-reported crashes only.

Source: All data were obtained from the NYS Department of Motor Vehicles.